

LIVE & LEARN FROM SPACE

-The future home

Short document  
contain

PERSONA - STORY

FUTURE HOUSE ON MARS

## PERSONA - STORY



Now humanity has been living on Mars for 5 years. Life on Mars has been a tough and trying time for humanity in space, pressures in the form of colonization, environmental change and research.

This has resulted in a colonized, self-sufficient society in the form of houses both on and below the ground, agricultural farms, solar farms and 3D print farms. But more people are needed for a better functioning society, as mentally-physically prepared astronauts.



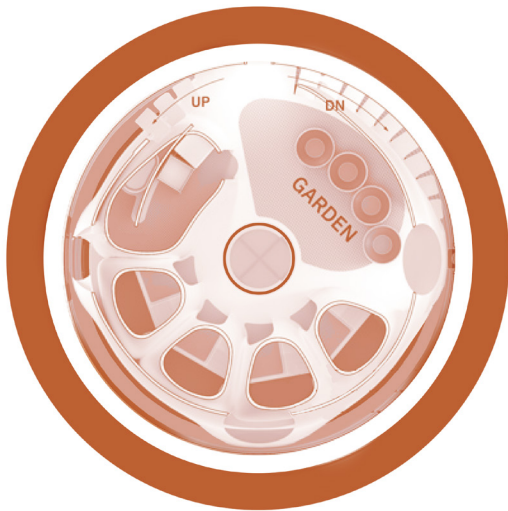
The future generation can follow the Mars journey through the "SPACEtravel" TV channel where people on earth can enjoy the latest updates from Mars. There, more people are encouraged and called upon to become astronauts.

There are many who become interested in space travel and invest in a future on Mars. The coast of Hawaii at a simulation camp organized by NASA, people are being tested by isolation from the outside world for eight months. Where they go through a time of overcrowding, teamwork, self-sufficiency and research assignments to be well prepared for life on Mars.

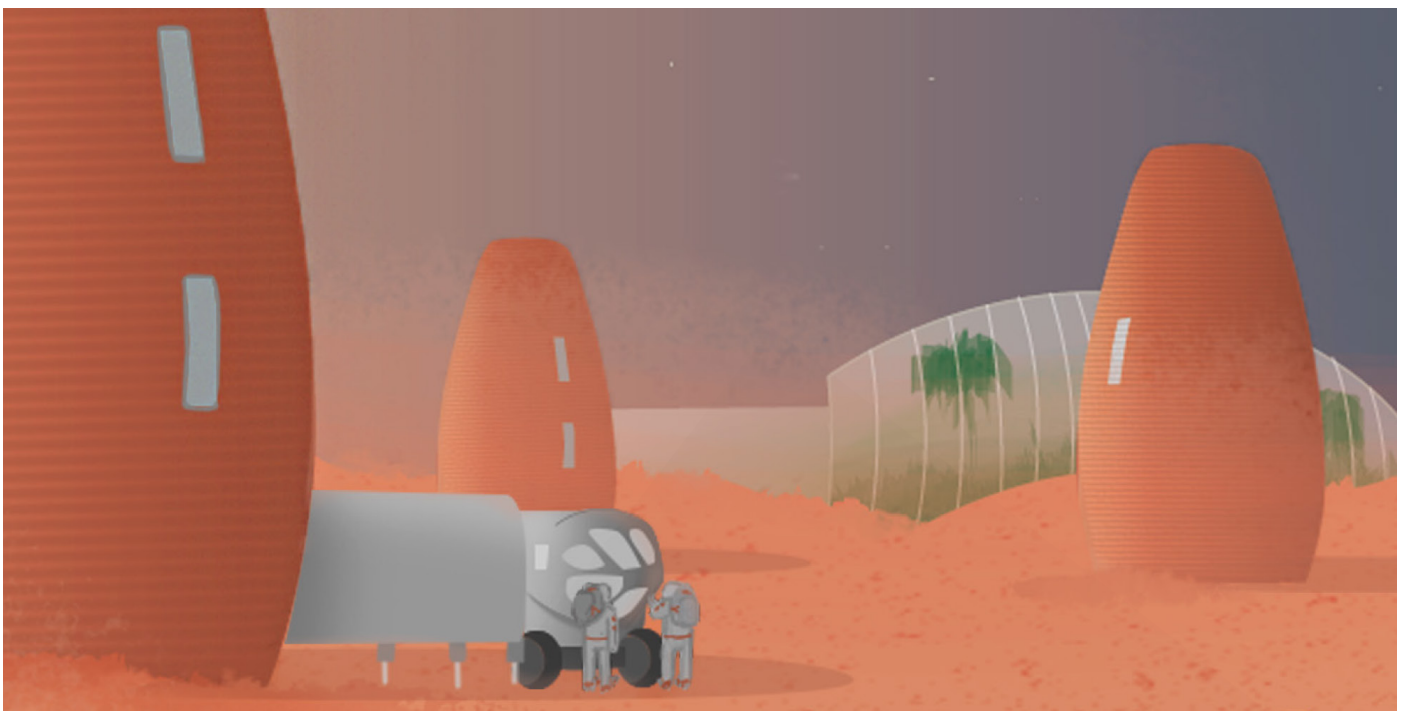


At the beginning the space shuttles will be sent out every four years as Mars and Earth are closest in distance increasing again. With carefully selected astronauts, the next generation can be part of the Marstransformation. After undergoing a seven-month journey, a new life chapter awaits the future Mars population.

## 3D-PRINTED HOUSE

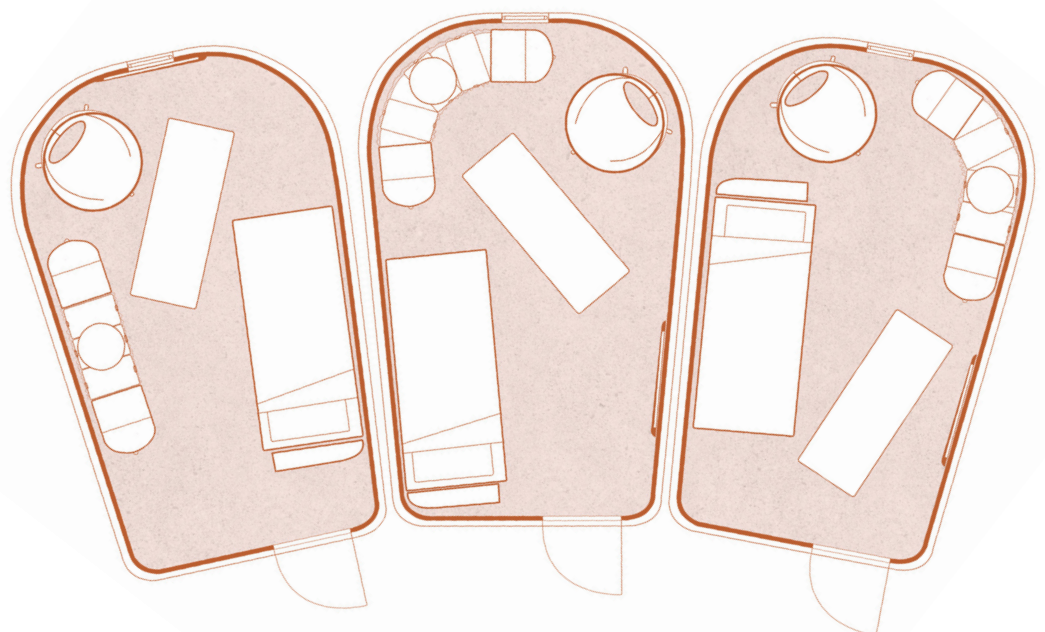


Marsha house is an alternative home on Mars created by AI SpaceFactory<sup>1</sup>. Which is based on a more collectively based home, where you share different facilities and have open spaces for socializing with a smaller private space. I could then ascertain how large the personal space could be, about 8-13sqm. As you can see, the exterior has a round house body, which is a sustainable house construction because energy conversion is efficiently evenly distributed. In addition, optimal design for 3D printing made from local materials. I stated that we will face new interior problems and the opportunity to create something completely new.



FLOOR PLAN

9 square meters



1. <https://www.aispacefactory.com/marsha>